

Telephone: (800) 242-4230 Fax: (877) 860-0195 Email: sales@webpbs.com www.webpbs.com

**Year Labels  
(500/roll)**

1-4 Rolls  
*\$8.50 per roll*

5-9 Rolls  
*\$7.50 per roll*

10+ Rolls  
*\$7.00 per roll*



## 2011 Year Labels Available Now!

It's year label time again and we've held last year's prices.  
If you do not receive a letter by September 10th please call PBS at **1-800-242-4230** and we will send you a 2011 year label flyer.

**PMA® Holographic**



1-1/2" x 3/4" • Polyaminated  
500/roll • 0711HGN  
2010 • 0710HGN



1-1/2" x 3/4" • Polyaminated  
500/roll • 0711HBE  
2010 • 0710HBE



1-1/2" x 3/4" • Polyaminated  
500/roll • 0711HAQ  
2010 • 0710HAQ



1-1/2" x 3/4" • Polyaminated  
500/roll • 0711HRD  
2010 • 0710HRD



1-1/2" x 3/4" • Polyaminated  
500/roll • 0711HOR  
2010 • 0710HOR



1-1/2" x 3/4" • Polyaminated  
500/roll • 0711HV  
2010 • 0710HV

**PMA® Fluorescent**



1-1/2" x 3/4" • Polyaminated  
500/roll • 0711FLPK  
2010 • 0710FLPK



1-1/2" x 3/4" • Polyaminated  
500/roll • 0711FLGN  
2010 • 0710FLGN



1-1/2" x 3/4" • Polyaminated  
500/roll • 0711FLY  
2010 • 0710FLY



1-1/2" x 3/4" • Polyaminated  
500/roll • 0711FLRD  
2010 • 0710FLRD



1-1/2" x 3/4" • Polyaminated  
500/roll • 0711FLOR  
2010 • 0710FLOR

**Ames®**



1-3/4" x 1/2" • Semi-gloss  
1000/roll • 0611AMGY  
10 10  
2010 • 0610AMRD



1-7/8" x 1-7/8" • Semi-gloss  
1000/roll • 0811AMGY  
2010 • 0810AMRD



1-1/2" x 3/4" • Polyaminated  
500/roll • 0711VLT  
10 10  
2010 • 0710RSP



1-1/2" x 3/4" • Polyaminated  
500/roll • 0711PK  
10 10  
2010 • 0710R



1-1/2" x 3/4" • Polyaminated  
500/roll • 0711RY  
2010 • 0710RY



1-1/2" x 3/4" • Polyaminated  
500/roll • 0711ORY  
2010 • 0710ORY



1-1/2" x 3/4" • Polyaminated  
500/roll • 0711BEY  
2010 • 0710BEY



1-1/2" x 3/4" • Polyaminated  
500/roll • 0711GNY  
2010 • 0710GNY



1" x 1/2" • Polyaminated  
500/Pkg • 0211RJT  
10 10  
2010 • 0210YJTE



1" x 1/2" • Polyaminated  
500/Pkg • 0211RJT  
10 10  
2010 • 0210YJT



1-1/2" x 3/4" • Polyaminated  
500/roll • 0711RJT  
10 10  
2010 • 0710YJTE



1-1/2" x 3/4" • Polyaminated  
500/roll • 0711RJT  
10 10  
2010 • 0710YJT



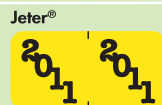
1-1/2" x 3/4" • Polyaminated  
500/roll • 0711LBE  
10 10  
2010 • 0710YWH



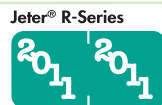
1-1/2" x 3/4" • Vinyl  
500/roll • 0711COF  
270/RB Pkg • 0411COF  
10 10  
2010 • 0710BSW  
2010 • 0410BSW



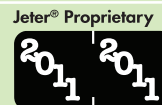
1-1/2" x 3/4" • Polyaminated  
500/roll • 0711BE  
10 10  
2010 • 0710GYW



1-1/2" x 3/4" • Polyaminated  
500/roll • 0711YBK  
270/RB Pkg • 0411YBK  
10 10  
2010 • 0710DBE  
2010 • 0410DBE



1-1/2" x 3/4" • Polyaminated  
500/roll • 0711JRG  
270/RB Pkg • 0410JYB  
10 10  
2010 • 0710JRM



1-1/2" x 3/4" • Polyaminated  
500/roll • 0711JBW  
270/RB Pkg • 0410JYB  
10 10  
2010 • 0710JYB  
2010 • 0411JBW



2011  
Authorization  
On File  
Yearly Authorization Label  
1-1/2" x 7/8" • FL Red  
500/roll • MAP7211  
2010  
Authorization  
On File  
2010 • MAP7210

This Newsletter was printed especially for...

**You!**

# 25% off

## Blue Light Special

Receive 25% off your next check order!

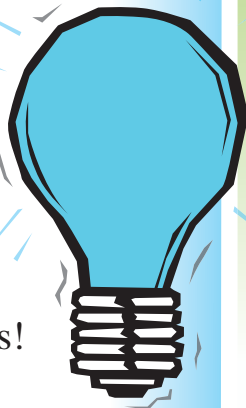
- **Laser Checks**  
(matching with most software  
- i.e. Quickbooks & Quicken)
- **Pegboard Checks**
- **3 to a Page Checks**

Mention this code when placing  
your order and get in on the savings!

**Code: 0810**

Offer is valid through October 31st 2010

### Call Today: 1-800-242-4230



## PBS Hours

**Business Hours are**  
Monday - Friday 8:00 am - 5:00 pm

After hours you may be directly  
connected to the voicemails of the PBS staff.

**Jerry - ext: 29**  
**Wendy - ext: 27**  
**Bonnie - ext: 28**

**Telephone: (800) 242-4230**  
**Fax: (877) 860-0195**  
**Email: sales@webpbs.com**

**Don't forget to visit our website at**  
**www.webpbs.com**

## SHIPPING & PRINTING

We are often asked how long the printing and  
shipping of a customer's order will be. In  
general:

**Printing of reorder items:**  
5-10 business days

**Printing of new items:**  
7-11 business days

**Stock Items:**  
Ship within 48 hours

Once an item is shipped you should receive it  
in 1-4 days depending on the destination.

## Have you had your 8?

For a human body to function properly, we must replenish our water supply by consuming beverages and foods that contain water. One popular method of calculating the necessary daily water intake is the "8 x 8 rule" - drink eight 8-ounce glasses of water a day.

### Did you know?

- Water helps to maintain healthy body weight by increasing metabolism and regulating appetite.
- Water leads to increased energy levels. The most common cause of daytime fatigue is actually mild dehydration.
- Drinking adequate amounts of water can decrease the risk of certain types of cancers, including colon cancer, bladder cancer, and breast cancer.
- For a majority of sufferers, drinking water can significantly reduce joint and/or back pain.
- Water leads to overall greater health by flushing out wastes and bacteria that can cause disease.
- Water can prevent and alleviate headaches.
- Water naturally moisturizes skin and ensures proper cellular formation underneath layers of skin to give it a healthy, glowing appearance.
- Water is the primary mode of transportation for all nutrients in the body and is essential for proper circulation.



## Dessert Pizza



### Ingredients:

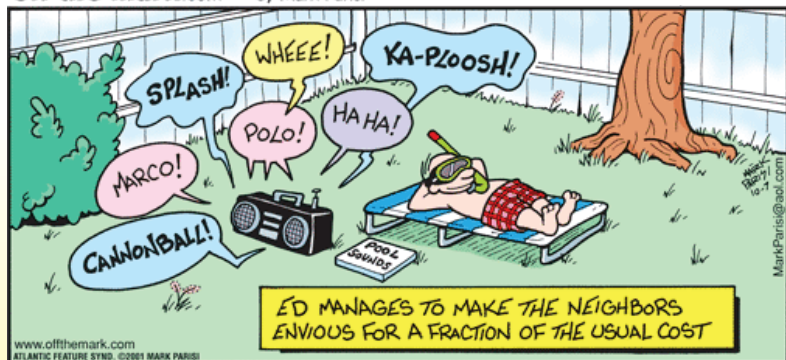
- 1/4 cup butter or margarine, softened
  - 1/2 cup sugar
  - 1 egg
  - 1/4 teaspoon vanilla extract
  - 1/4 teaspoon lemon extract
  - 1 1/4 cups all-purpose flour
  - 1/4 teaspoon baking powder
  - 1/4 teaspoon baking soda
  - 1/4 teaspoon salt
  - 4 ounces cream cheese, softened
  - 1/4 cup confectioners' sugar
  - 1 cup whipped topping
  - 1 firm banana, sliced
  - 1 cup sliced fresh strawberries
  - 1 (8 ounce) can mandarin oranges, drained
  - 2 kiwifruit, peeled and thinly sliced
  - 1/3 cup fresh blueberries
- GLAZE:**
- 1/4 cup sugar
  - 1/4 cup orange juice
  - 1/4 cup water
  - 2 teaspoons cornstarch

### Directions

1. In a mixing bowl, cream butter and sugar; beat in egg and extracts. Combine flour, baking powder, baking soda and salt; add to creamed mixture. Beat well. Cover and chill for 30 minutes. Press dough into a greased 12-in. x 14-in. pizza pan. Bake at 350 degrees F for 12-14 minutes or until light golden brown. Cool completely.
2. In a mixing bowl, beat cream cheese and confectioners' sugar until smooth. Add whipped topping; mix well. Spread over crust. Arrange fruit on top. Combine glaze ingredients in a saucepan; bring to a boil, stirring constantly. Boil for 2 minutes or until thickened. Cool to room temperature, about 30 minutes. Brush over fruit. Store in refrigerator. Enjoy!

Recipe from allrecipes.com

off the mark.com by Mark Parisi



## Did you know??

**It would take 11 Empire State Buildings,  
stacked one on top of the other, to measure  
the Gulf of Mexico at its deepest point.**

P.O. Box 420  
Omro, Wisconsin 54963

***In This Issue:***

**11 11**  
2011 YEAR LABELS

• Cover: Year Labels are here!

• **Blue Light** Special - see inside  
for DISCOUNT specials.



• Health Facts - Have you had your 8?



...and much more!



# Order Your Holiday Cards Early and Save!



Order by **10/30/10** and receive  
a 35% off discount

Order by **12/04/10** and receive  
a 25% off discount

Mention the code below when  
placing your order.

***Code: 0910***

If you're thinking about sending Holiday Cards please contact us for a complete 2011 catalog.